



RUDYARD KIPLING
Primary School & Nursery,
Woodingdean

Meet the Teacher



Spring Term



Parks Class



Miss Wiseman
Class Teacher



Mrs Burt
Play Team



Mrs Hollingsworth
Learning Support Assistant



Mrs Bryant
Learning Support Assistant



Mr Mackarness
PPA Teacher



RUDYARD KIPLING

Primary School & Nursery,
Woodingdean

Today, we will talk about:

- Routines, timetable and any other parent/carer information
- Year group, class and home-school learning information
- Questions at the end



Rudyard Kipling Primary School & Nursery Our School Uniform

The children look so smart - thank you.



Our school uniform is available on our Website and is:

- Plain grey skirt, pinafore dress, grey smart tailored trousers
- Navy sweatshirt, fleece with school logo - available from school
- Navy polo shirt with logo - available from school
- Securely fastening black or navy shoes - Velcro fastenings only in Reception Class

In warmer weather the following may be worn:

- Navy & white striped or checked dress
- Plain grey tailored shorts
- Secure fastening sandals



Now it's so chilly outside...





RUDYARD KIPLING
Primary School & Nursery,
Woodingdean

PE Days



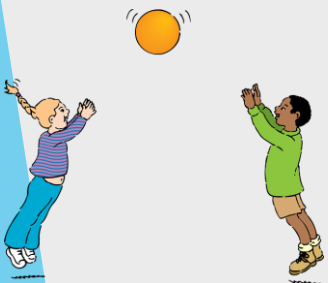
Parks Class's PE days are
Monday and Thursday

P.E.

All children need to have a PE kit. This is made up of the school navy PE t-shirt, dark shorts or navy joggers and plimsolls/trainers. However your children are welcome to wear a plain navy t-shirt.



All clothes and possessions should be carefully marked with the child's full name- permanent marker pens are perfect or see Stikins label flyer on our website.





RUDYARD KIPLING
Primary School & Nursery,
Woodingdean

Special Mentions

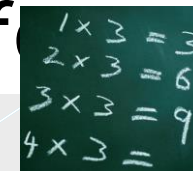


Special Mentions assemblies are every Friday after Rock Up and Read.



You will continue to receive a Ping on the Friday before.

You will continue to receive a Ping for Merit Stars and Maths Mission Awards on the Friday before.





RUDYARD KIPLING
Primary School & Nursery,
Woodingdean

Rock Up And Read



Most Friday's at 8:40-9:00





RUDYARD KIPLING
Primary School & Nursery,
Woodingdean

Parent Newsletters and SchoolPing



Use your SchoolPing
account to receive
important messages.



Freshly Baked Bread, Salad, Yoghurt and Fruit available daily. Milk free Yoghurt available daily & Ice Cream when served.

Brighton & Hove Autumn/Winter Menu 2024



(V) Vegan Wholemeal

Meal Manager

Please look through this with your child so they have something for lunch they like.

		MONDAY	TUESDAY	WEDNESDAY	THURSDAY	FRIDAY
WEEK ONE 4.11 25.11 16.12 20.1 10.2 10.3 31.3	Main	Macaroni Cheese	BBQ Chicken Fillet with Jollof Rice 🌱	Roast Chicken Breast & Stuffing with Roast Potatoes & Gravy	Farm Assured Beef Burger with Wedges & Tomato Relish	MSC Fishfingers with Chips & Homemade Tomato Sauce
	Vegetarian	Vegan Chilli with 50:50 rice 🌱	Vegan Quorn Sausages with Mashed Potato & Gravy	Sweet Potato & Spinach Tart with Roast Potatoes & Gravy (V)	Vegan Meatball Tomato Pasta 🌱	Falafel with Chips & Homemade Tomato Sauce (V)
	Jacket Potato	Baked Beans (V)	Tuna Mayonnaise	Cheese	Baked Beans (V)	Cheese
	Vegetable	Carrots & Sweetcorn	Peas & Cauliflower	Roasted Vegetables & Broccoli	Sweetcorn & Grated Carrot	Peas & Baked Beans
	Deserts	Apple & Raisin Flapjack with Peaches (V) 🌱	Chocolate Beetroot Cake 🌱	Jelly (V) & Ice Cream	Cornflake Tart & Custard or Jam Tart (V)	Oaty Cookie with Fruity Friday(V) 🌱
	WEEK TWO 11.11 2.12 6.1 27.1 24.2 17.3	Main	Homemade Cheese & Tomato Pizza 🌱	Wholewheat Penne Pasta Bolognese 🌱	Roast Turkey & Yorkshire Pudding with Roast Potatoes & Gravy	Chicken Tikka Masala with 50:50 Rice 🌱
Vegetarian		Vegan Cottage Pie	Veggie or Vegan Quesadilla with Jollof Rice 🌱	Roast Quorn (V) & Yorkshire Pudding, Roast Potatoes & Gravy	Golden Macaroni Cheese or Pasta with Tomato Sauce (V) 🌱	Mexican Bean Roll with Chips and Homemade Tomato Sauce (V)
Jacket Potato		Baked Beans (V)	Tuna Mayonnaise	Cheese	Baked Beans (V)	Cheese
Vegetable		Grated Carrot & Sweetcorn	Peas & Cauliflower	Carrot Batons & Savoy Cabbage	Green Beans & Sweetcorn	Peas & Baked beans
Deserts		Fruity Shortbread (V) 🌱	Lemon Cake 🌱	Yoghurt Station & Fruit Platter	Jelly & Mandarins	Chocolate Cookie with Fruity Friday (V) 🌱
WEEK THREE 18.11 9.12 13.1 3.2 3.3 24.3		Main	Pork Sausages with Mashed Potato & Gravy	Wholewheat Penne Chicken Pasta Bake 🌱	Lemon & Herb Roast Chicken Thigh, Roast Potatoes & Gravy	Homemade Cheese & Tomato Pizza 🌱
	Vegetarian	Lentil & Sweet Potato Curry with Jollof Rice (V) 🌱	Vegan Puff Pastry Whirl with Homemade Jacket Wedges	Crunchy Vegetable Bake with Roast Potatoes & Gravy (V)	Wholewheat Penne Vegan Bolognese 🌱	Vegan Quorn Sausages with Chips & Homemade Tomato Sauce (V)
	Jacket Potato	Tuna Mayonnaise	Baked Beans (V)	Cheese	Baked Beans (V)	Cheese
	Vegetable	Carrots & Sweetcorn	Broccoli & Cauliflower	Peas & Carrot Swede Mash	Sweetcorn & Coleslaw	Peas & Baked Beans
	Deserts	Golden Cookie (V) 🌱	Berry Mousse or Jelly (V)	Peaches (V) & Ice Cream	Fairtrade Banana Cake & Custard 🌱	Vanilla Shortbread with Fruity Friday (V) 🌱
	Packed Lunch	Tomato Pasta Salad (V)	Cheese and Cucumber Baguette	Roast Quorn Baguette (V)	Cream Cheese & Pepper Baguette	Hot Vegan Sausage Baguette (V)

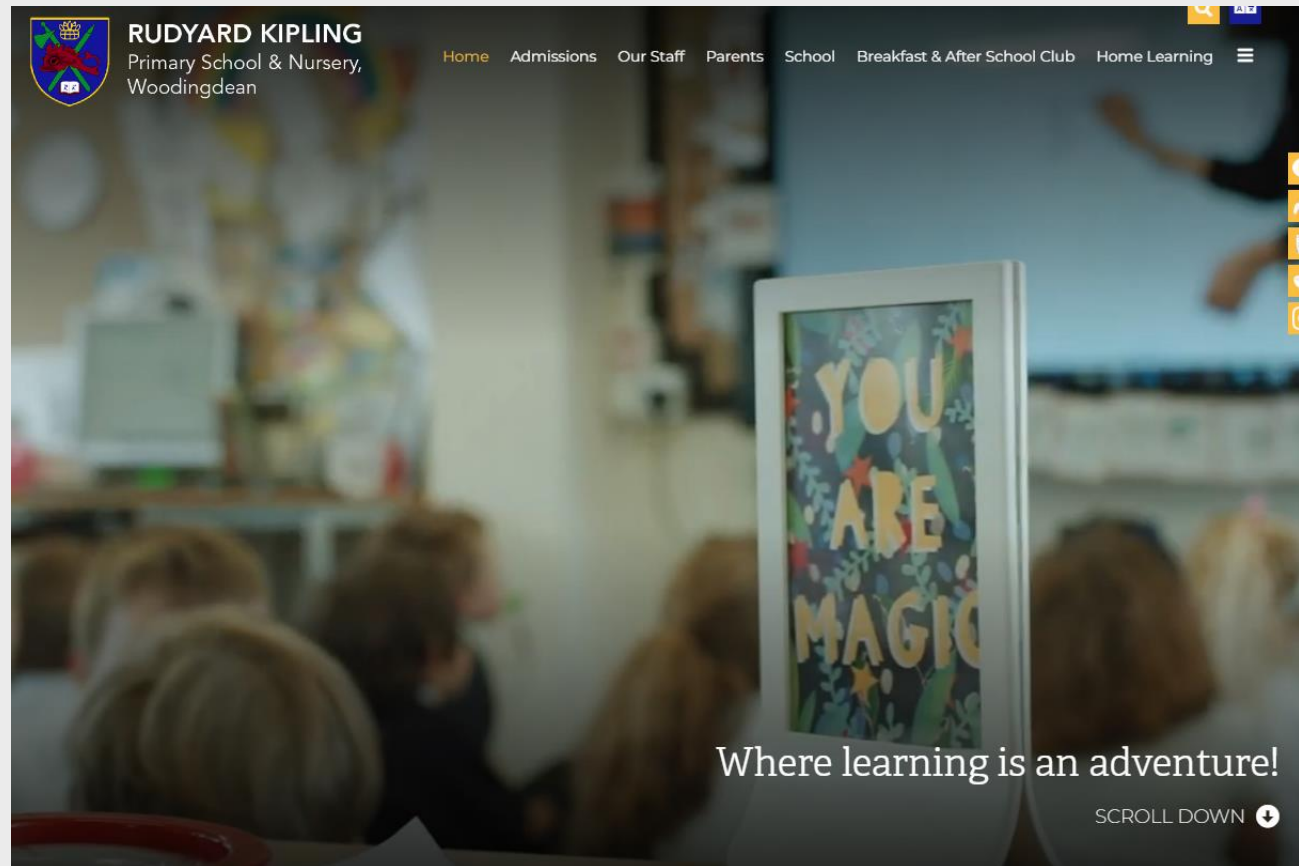




RUDYARD KIPLING
Primary School & Nursery,
Woodingdean

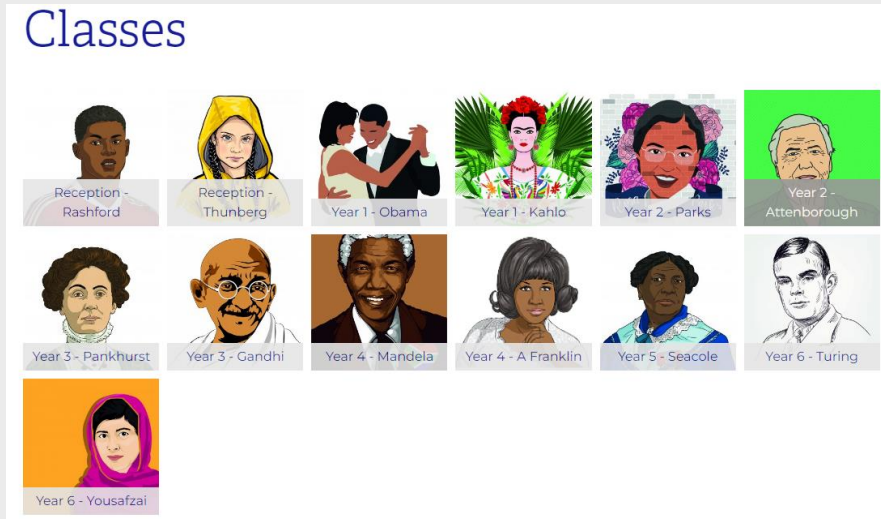
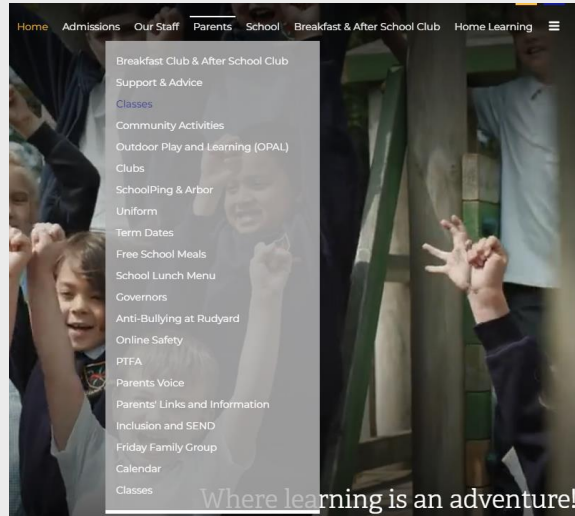
School Website

<https://www.rudyardkiplingprimary.co.uk/>





Class Page



Meet the Teacher Parks



Year 2 Curriculum Map Autumn v2



Rudyard Menu Spring Summer 24 v6



Year 2 Words v2



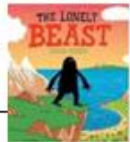
Year 1 Words v2





Curriculum Map

Term: Spring
Key Stage 1
Year 2



English

Concentrating on spelling and re reading work to ensure it makes sense.

Books

- The Lonely Beast
- The Storm Whale
- Leaf



PoR:

- Stories
- Poetry
- Description
- Information texts
- Letters
- Diary entries
- Freeze frames



Maths

- Addition and Subtraction
- Multiplication and Division
- Shape
- Length and Height
- Mass, Capacity and Temperature



History

- To investigate and interpret the past: The Great Fire of London
- To understand chronology: significant events: GFL
- Describe significant people from the past: Samuel Pepys
- Recognise there are reasons as to why things have now changed in London.



PSHE



- Empowerment approach – the brain, being comfortable, growth zone, connecting, feeling counted and in control
- Mental Health and Wellbeing - How physical activity helps keep us healthy, why sleep is important, different ways to play and how to manage big feelings we have.
- Careers and Gender – how jobs help people earn money they need, explore a variety of jobs within the community and think about some strengths and interests someone might need for different jobs, tackle gender stereotypes within a range of careers.



Geography

- Identifying the Arctic, Antarctica and UK on a map.
- Describing differences and similarities between the Arctic and the UK.
- Describing climate and weather patterns in the Arctic.
- Identifying human and physical features.
- Describing cities, towns and the culture of the Inuit people.



PE Days

- Attenborough - **Thursdays** and **Fridays**.
 - Parks – **Mondays** and **Thursdays**
- Please send your child to school in their PE kit.



Music

- Looking at beat, pulse and timing
- Creating music that would match a scene from the Great Fire of London.
- Singing as a class/in a round
- Ostinato/two parts



Design & Technology

- Researching, designing, making and evaluating a product – finger puppet

Art

- Responding to images
- Blending colours using watercolour
- Exploring different ways to use paintbrushes
- Sketching skills using a pencil



Science

- Work scientifically
- To identify what materials everyday objects are made from.
- To understand the different properties and uses of everyday materials



PE

Gymnastics

- Using the equipment to travel
 - Creating short sequences
- Send and Return
- Tennis skills



RE

Beliefs, teachings and practices as well as the meanings behind special symbols used in:

- Buddhism
- Judaism



ICT

- Using the internet to find out information
- Drawing pictures
- Animation - Great Fire of London



'Fire' Take Home Tasks!

This half term we are learning about 'The Great Fire of London'!

During this half term and your half term break, you could choose any of the homework tasks under a heading, then simply colour in the circle when you are done!

Don't forget to take pictures and bring in your amazing work if possible

Please read every day, and practice spellings.



<u>English</u> <ul style="list-style-type: none">o Can you write a diary entry like Samuel Pepys did in the 1600s and describe what it would have been like to escape the awful fire!o Feeling really ADVENTUROUS? You could write a series of diary entries, what happened the night of and what were your experiences after this?o Can you write a list poem all about fire? Think about the way fire looks, smells and sounds.	<u>History</u> <ul style="list-style-type: none">o Samuel Pepys – who was he?o Who was on the throne in 1666?o Who was Thomas Fawcett?o Which came first? The Great Fire of London, the Millennium Dome or Henry VIII. Create a timeline of interesting English events.
<u>Maths</u> <ul style="list-style-type: none">o Times tables – 2, 5, 10o Practise Numbers and times Tables Rock Stars.o Compare the length, height, mass or capacity of different objects.	<u>Geography</u> <ul style="list-style-type: none">o Research some famous landmarks in London – how has the skyline changed over time?o You could even go to London look at maps online and try out the Museum of London's Great Fire of London Family Walk – see their website for more details.
<u>Art/Design Technology</u> <ul style="list-style-type: none">o Can you make a model of what a house in 1666 would have looked like? Which materials will you use to make it?o Create a night sky silhouette of the Great Fire of London. 	<u>Science</u> <ul style="list-style-type: none">o Design and label your own fire extinguishing machine! How are fires stops? What is used?





RUDYARD KIPLING
Primary School & Nursery,
Woodingdean

Parks Days for:

Computing: TUESDAY



Library: FRIDAY



Dates TBC:

Spring Term - Firefighters' visit

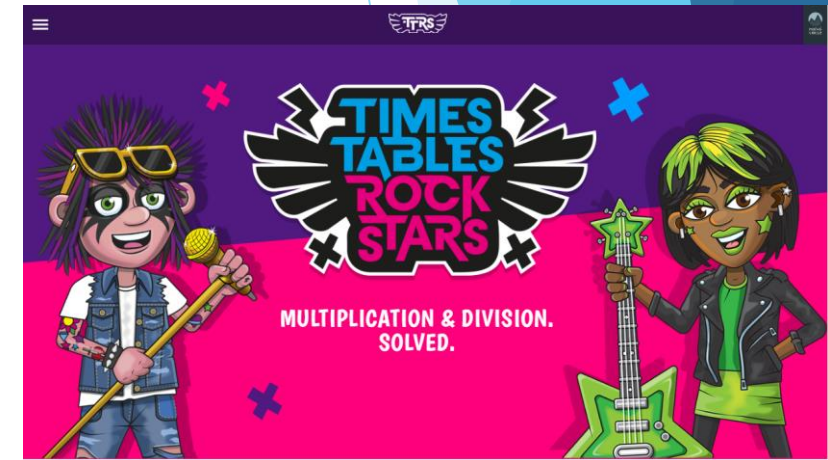
Summer Term - Local walk

- Drusilla's Zoo Park





- Practise regularly
- Increase confidence
- Increase fluency
- Tackle challenges



Login:
surnam:@rkps.me
Password: words123



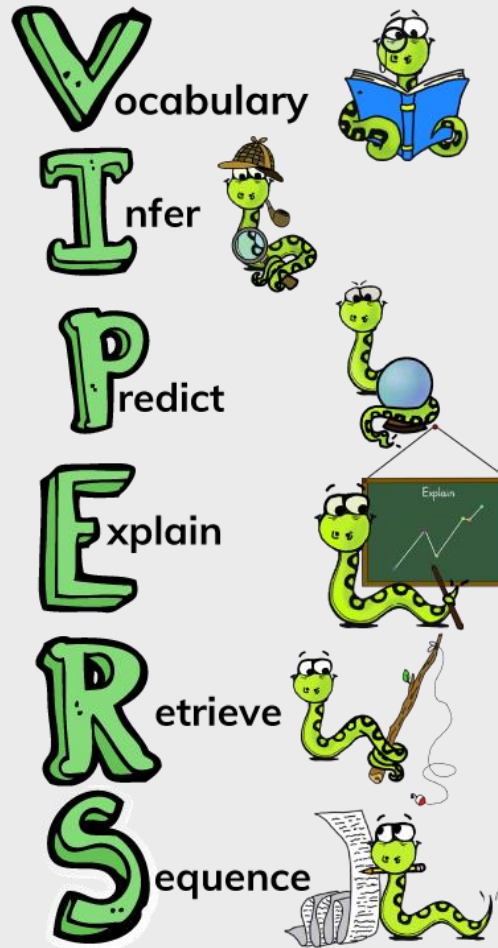
Reading

- Read your reading book 3 times a week
- Record this in your reading record
- Choose a reading for pleasure book
- Hand in your reading record weekly
- 3 reads = 1 raffle ticket drawn in Special Mentions assembly

Friday is the day to change reading books, but children can change them more often if they have done their 3 reads.



How can I support my child with reading?





How can I support my child with spelling?

Year 1 Words

a	go	me	put	they
are	here	my	said	to
ask	has	no	says	today
be	he	of	school	was
by	his	one	she	we
come	house	once	so	were
do	I	our	some	where
friend	is	pull	the	you
full	love	push	there	your

Year 2 Words

after	busy	door	gold	many	parents	should
again	child	even	grass	mind	pass	steal
any	children	every	great	money	past	sugar
both	Christmas	everybody	half	most	path	sure
beautiful	class	eye	hold	move	people	told
because	climb	fast	hour	Mr	plant	water
behind	clothes	father	improve	Mrs	poor	who
both	cold	find	kind	old	pretty	whole
break	could	floor	last	only	prove	wild
						would



RUDYARD KIPLING
Primary School & Nursery,
Woodingdean

Any
questions?

